

# Cynomolgus M-CSF/CSF-1 Protein

Cat. No. CSF-CM101

## Description

<b>Source</b>	Recombinant Cynomolgus M-CSF/CSF-1 Protein is expressed from HEK293 with His tag at the C-Terminus. It contains Glu33-Leu255.
<b>Accession</b>	XP_045221641.1
<b>Molecular Weight</b>	The protein has a predicted MW of 26.26 kDa. Due to glycosylation, the protein migrates to 45-55 kDa based on Tris-Bis PAGE result.
<b>Endotoxin</b>	Less than 1EU per $\mu\text{g}$ by the LAL method.
<b>Purity</b>	> 95% as determined by Tris-Bis PAGE

## Formulation and Storage

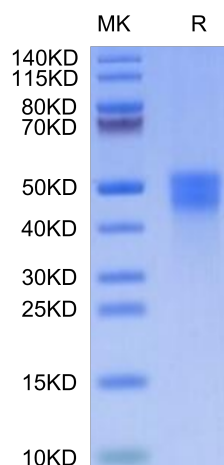
<b>Formulation</b>	Lyophilized from 0.22 $\mu\text{m}$ filtered solution in PBS (pH 7.4). Normally 8% trehalose is added as protectant before lyophilization.
<b>Reconstitution</b>	Centrifuge the tube before opening. Reconstituting to a concentration more than 100 $\mu\text{g}/\text{ml}$ is recommended. Dissolve the lyophilized protein in distilled water.
<b>Storage</b>	-20 to -80°C for 12 months as supplied from date of receipt. -80°C for 3-6 months after reconstitution. 2-8°C for 2-7 days after reconstitution. Recommend to aliquot the protein into smaller quantities for optimal storage. Please minimize freeze-thaw cycles.

## Background

CSF-1, also known as M-CSF, is a four  $\alpha$ -helical-bundle cytokine that is the primary regulator of macrophage survival, proliferation and differentiation. CSF-1 is also essential for the survival and proliferation of osteoclast progenitors. CSF-1 is cytokine that plays an essential role in the regulation of survival, proliferation and differentiation of hematopoietic precursor cells, especially mononuclear phagocytes, such as macrophages and monocytes. Promotes the release of proinflammatory chemokines, and thereby plays an important role in innate immunity and in inflammatory processes. This mutation leads to a deletion of exons 2-7 of the EGFR gene and renders the mutant receptor incapable of binding any known ligand.

## Assay Data

### Tris-Bis PAGE



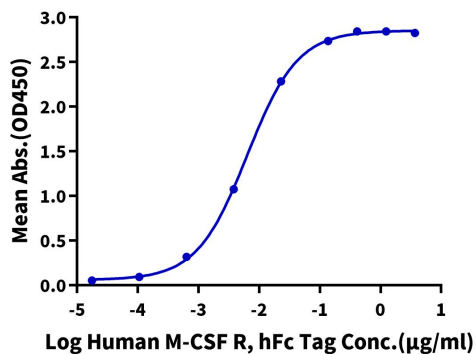
Cynomolgus M-CSF on Tris-Bis PAGE under reduced condition. The purity is greater than 95%.

### ELISA Data

Assay Data

**Cynomolgus M-CSF, His Tag ELISA**

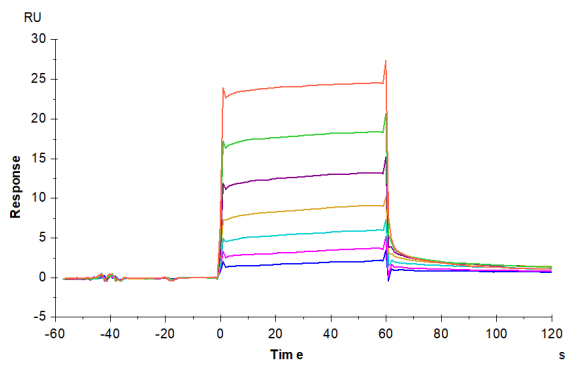
0.1µg Cynomolgus M-CSF, His Tag Per Well



Immobilized Cynomolgus M-CSF, His Tag at 1µg/ml (100µl/well) on the plate. Dose response curve for Human M-CSF R, hFc Tag with the EC50 of 6.5ng/ml determined by ELISA (QC Test).

Assay Data

SPR Data



Cynomolgus M-CSF R, His Tag immobilized on CM5 Chip can bind Cynomolgus M-CSF, His Tag with an affinity constant of 0.889  $\mu$ M as determined in SPR assay (Biacore T200).